



Operating Guide
Manuel d'utilisation
Gebruiksaanwijzing
Manual de funcionamiento
Guida all'uso
Gebrauchsanweisung

PBC17-13338

PBC45-13339

VBC-10 Vibration Bark Control

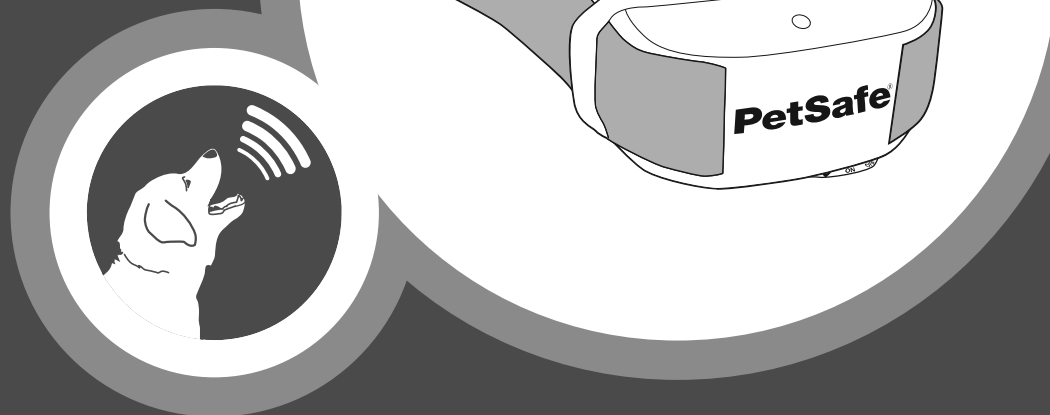
VBC-10 Contrôle des aboiements par vibrations

VBC-10 Vibrerende Blafbeheersing

VBC-10 Control de los ladridos por vibración

VBC-10 Controllo dell'abbaio a vibrazione

VBC-10 Bellkontrolle mit Vibration



Please read this entire guide before beginning
Veuillez lire ce manuel en entier avant de commencer
Gelieve deze gids volledig door te lezen voordat u begint
Por favor, lea este manual completamente antes de empezar
Si prega di leggere attentamente la guida al uso prima di utilizzare il collare
Bitte lesen Sie die gesamte Betriebsanleitung vor dem Trainingsbeginn

IMPORTANT SAFETY INFORMATION

Explanation of Attention Words and Symbols used in this guide



This is the safety alert symbol. It is used to alert you to potential personal injury hazards. Obey all safety messages that follow this symbol to avoid possible injury or death.

⚠ WARNING

WARNING indicates a hazardous situation which, if not avoided, could result in death or serious injury.

⚠ CAUTION

CAUTION, used with the safety alert symbol, indicates a hazardous situation which, if not avoided, could result in minor or moderate injury.

CAUTION

CAUTION, used without the safety alert symbol, indicates a hazardous situation which, if not avoided, could result in harm to your pet.

⚠ WARNING

- Not for use with aggressive dogs. Do not use this product if your dog is aggressive, or if your dog is prone to aggressive behaviour. Aggressive dogs can cause severe injury and even death to their owner and others. If you are unsure whether this product is appropriate for your dog, please consult your veterinarian or a certified trainer.
- Do not attempt to cut into or pry open the battery. Be sure to discard the used battery properly.

⚠ CAUTION

The PetSafe® VBC-10 Vibration Bark Control is not a toy. Keep it away from the reach of children. Use it only for its bark stopping purpose.

CAUTION

Please read and follow the instructions in this manual. Proper fit of the collar is important. A collar worn for too long, or made too tight on the pet's neck may cause skin damage. This is called bed sores; it is also called decubitus ulcers or pressure necrosis.

- Avoid leaving the collar on the dog for more than 12 hours per day.
- When possible reposition the collar on the pet's neck every 1 to 2 hours.
- Check the fit to prevent excessive pressure; follow the instructions in this manual.
- Never connect a lead to the electronic collar; it will cause excessive pressure on the contacts.
- When using a separate collar for a lead, don't put pressure on the electronic collar.
- Wash the dog's neck area and the contacts of the collar weekly with a damp cloth.
- Examine the contact area daily for signs of a rash or a sore.
- If a rash or sore is found, discontinue use of the collar until the skin has healed.
- If the condition persists beyond 48 hours, see your veterinarian.

For additional information on bed sores and pressure necrosis, please visit our website.

These steps will help keep your pet safe and comfortable. Millions of pets are comfortable while they wear stainless steel contacts. Some pets are sensitive to contact pressure. You may find after some time that your pet is very tolerant of the collar. If so, you may relax some of these precautions. It is important to continue daily checks of the contact area. If redness or sores are found, discontinue use until the skin has fully healed.

- The PetSafe® VBC-10 Vibration Bark Control must be used only on healthy dogs. We recommend that you take your dog to a veterinarian before using the collar if he is not in good health.
- Do not shave the pet's neck as this may increase the risk of skin irritation.
- You should not make the collar any tighter than is required for good contact. A collar that is too tight will increase the risk of pressure necrosis in the contact area.

EN

FR

NL

ES

IT

DE

Thank you for choosing PetSafe®. Through consistent use of our products, you can have a better behaved dog in less time than with other training tools. **If you have any questions, please contact the Customer Care Centre. For a listing of Customer Care Centre telephone numbers, visit our website at www.petsafe.net.**

To get the most protection out of your warranty, please register your product within 30 days at www.petsafe.net. By registering and keeping your receipt, you will enjoy the product's full warranty and should you ever need to call the Customer Care Centre, we will be able to help you faster. Most importantly, PetSafe® will never give or sell your valuable information to anyone. Complete warranty information is available online at www.petsafe.net.

Table of Contents

Components	5
Features	5
How the System Works	6
Key Definitions	6
Fit the Bark Control Collar	7
ON/OFF Battery Module	8
To Insert and Remove the Battery	8
To Test the Vibration Bark Control Collar	10
What to Expect During Use of the Vibration Bark Control Collar	10
Accessories	11
Regular Maintenance	11
Frequently Asked Questions	12
Troubleshooting	13
Battery Disposal	13
Compliance	14
Terms of Use and Limitation of Liability	15

Components

EN

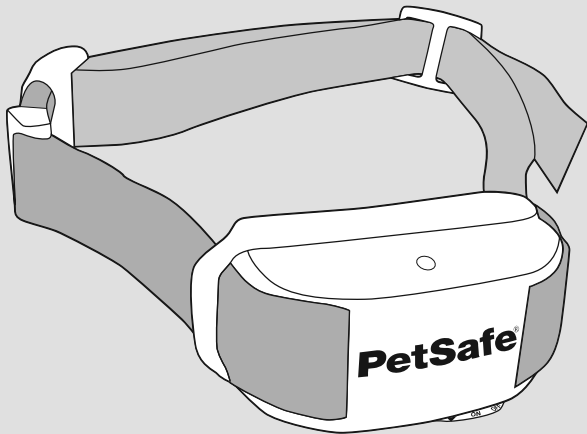
FR

NL

ES

IT

DE



VBC-10 Vibration Bark Control Collar



Battery
(PetSafe® RFA-188)



Operating Guide

Features

- Uses vibration to interrupt the dog's barking
- Durable and waterproof
- Three colour LED for good/low battery and test indicators
- On/Off position for longer battery life
- Easy to use
- Patented Perfect Bark™ technology ensures your dog's bark is the only sound that will cause the stimulation

How the System Works

The VBC-10 Vibration Bark Control Collar has two primary features designed to shorten the training phase and promote good behaviour.

First, the Bark Control Control offers 10 combinations of Vibration Stimulation. When the dog barks, vibration is delivered from one of the two Vibration Points. The duration of the vibration is random, which interrupts the dog's bark. When used according to instruction the Vibration Bark Control Collar safely reduces (and in most cases eliminates) nuisance barking.

Second, the Vibration Bark Control Collar includes Patented Perfect Bark™ technology. It uses both vibration and sound sensors (dual-detection) to discriminate each bark from other external noises. This ensures your dog's bark is the only sound that will cause the stimulation.

As a built-in safety feature, if your dog barks 15 times or more within a 1 minute 20 second period, the Bark Control Collar will automatically shut off for 1 minute.

Important: Before playing with your dog, remove the Vibration Bark Control Collar. The activity may cause your dog to bark, which could lead him to associate the play with the Vibration Stimulation.

Key Definitions

Three Colour LED: Shows good or low battery and indicates Test Mode.

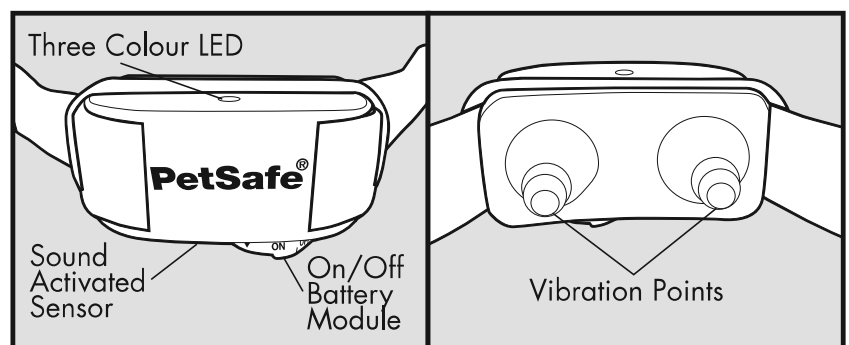
Sound Activated

Sensor: Detects the sound of your dog's bark.

Vibration Points: Deliver the Vibration Stimulation.

On/Off Battery

Module: Turns the collar on and off.



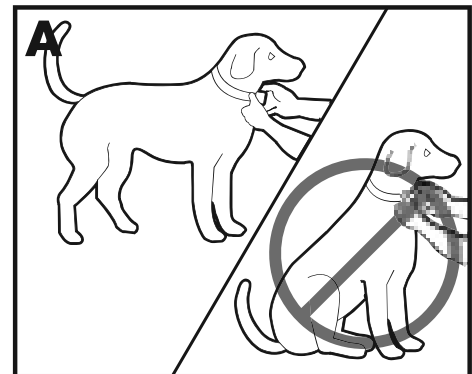
Fit the Bark Control Collar

Important: The proper fit and placement of your Bark Control Collar is important for effective operation. The Vibration Points must have direct contact with your dog's skin on the underside of his neck.

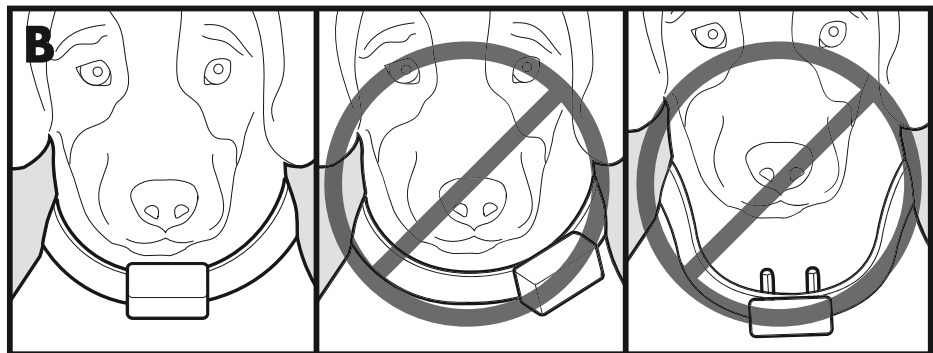
Please refer to page 3 for Important Safety Information.

To assure a proper fit, please follow these steps:

1. Make sure that the battery is in the "OFF" position.
2. Have your dog standing comfortably **(A)**.
3. Center the Vibration Points underneath your dog's neck, touching the skin **(B)**.



Note: It is sometimes necessary to trim the hair around the Vibration Points to make sure that contact is consistent.



CAUTION

Do not shave the pet's neck as this may increase the risk of skin irritation.

4. Check the tightness of the Bark Control Collar by inserting one finger between the strap and the dog's neck **(C)**. The fit should be snug but not constricting.



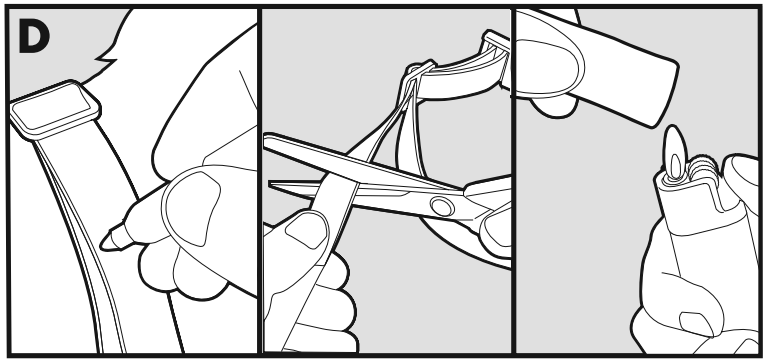
CAUTION

You should not make the collar any more tight than is required for good contact. A collar that is too tight will increase the risk of pressure necrosis in the contact area.

5. Allow your dog to wear the collar for several minutes, then recheck the fit. Check the fit again as your dog becomes more comfortable with the Bark Control Collar.

6. Trim the collar as follows (D):

- Mark the desired length of the collar with a pen. Allow for growth if your dog is young or grows a thick winter coat.
- Remove the Bark Control Collar from your dog and cut off excess.
- Before placing the Bark Control Collar back onto your dog, seal the edge of the cut collar by applying a flame along the frayed edge.



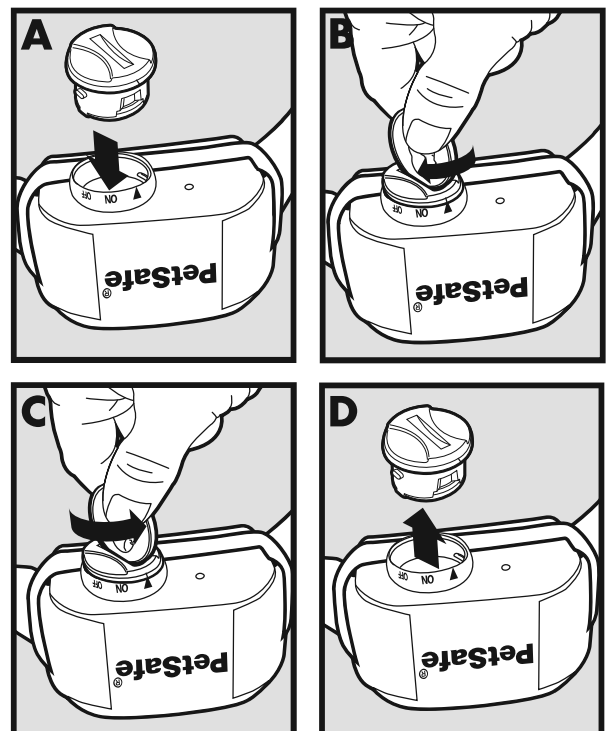
ON/OFF Battery Module

The PetSafe® VBC-10 Vibration Bark Control is packaged with the battery module installed in the "OFF" position. To activate the collar, use a coin to turn the Battery Module counter clockwise until the arrow lines up with the "ON" position. If the collar is not going to be used on the dog immediately leave it in the "OFF" position.

To Insert and Remove the Battery

Note: Do not install the battery while the Bark Control Collar is on your dog.

- Align the line on the battery with the triangle on the Bark Control Collar (A).
- Use a coin to turn the battery clockwise until the line points to the "ON" position if you are putting it on the dog or the "OFF" position if it is not being put on the dog right away (B).
- To remove the battery, turn the battery counter-clockwise using a coin (C, D).



⚠ WARNING

Do not attempt to cut into or pry open the battery. Be sure to discard the used battery properly.

This Bark Control Collar utilizes a replaceable PetSafe® battery (RFA-188). This unique battery is designed to make battery replacement easier and increase water protection.

A replacement PetSafe® battery (RFA-188) can be found at many retailers. Contact the Customer Care Centre or visit our web site at www.petsafe.net to locate a retailer near you.

Battery Life

Average battery life is 3 to 6 months, depending on how often your dog barks. However, due to greater use during your dog's training, your first battery may not last as long as replacement batteries. To conserve battery life, turn to the "OFF" position when the Bark Control Collar is not in use.

Three Colour LED

The three color LED indicator shows good or low battery and indicates Test Mode. Good battery equals 1 flash every 5 seconds with Green LED. Low battery equals 3 flashes every 5 seconds with the Red LED. If there are no LED lights it is time to change the battery.

LED Function and Response Table

Function	LED Light Response
Unit is ON	Green LED Light flashes once every 5 seconds
Low battery condition	Red LED Light flashes 3 times every 5 seconds
Delivering vibration	Red LED Light flashes for each stimulation
Test Mode	Orange LED flashes

EN

FR

NL

ES

IT

DE

To Test the Vibration Bark Control Collar

1. Begin with the Collar in the "OFF" position.
2. Turn to the "ON" position until the LED shows Orange.
3. Immediately turn to the "OFF" position after seeing the Orange LED.
4. Turn to the "ON" position. The LED will flash Orange and you are now in test mode.
5. Blow into the microphone and the Orange LED will flash to indicate that the microphone is working.
6. Scratch lightly between the Vibration Points to indicate the vibration is working.
7. If the LED light does not flash and there is no vibration, ensure that the battery is properly installed, and/or replace the battery. If there is still no response, contact the Customer Care Centre.
8. Turn "OFF" to end the test mode. The test mode will also time out after 30 seconds and resume normal operation.

What to Expect During Use of the Vibration Bark Control Collar

Important: Do not leave your dog alone the first few times he receives a Vibration Stimulation.

Place the Bark Control Collar properly on your dog and wait nearby until he barks. Most dogs will understand very quickly that the Bark Control Collar is disrupting their urge to bark and will relax and stop barking. Because the Vibration Stimulation from the Bark Control Collar may be surprising or startling at first, some dogs may bark more at the initial stimulation.

On rare occasions, a dog may get into a bark-stimulation-bark-stimulation cycle. If this happens, reassure your dog with calm, soothing tones. As your dog relaxes, he will understand that if he becomes quiet, he will not receive any more Vibration Stimulations. The small minority of dogs that have this reaction will only have it the first time they wear the Bark Control Collar.

You should notice a reduction in your dog's barking within the first couple of days that he wears the Bark Control Collar. At this point, it is important to remember the learning process is still not complete. Dogs will "test" this new learning experience and will increase their attempts to bark. This usually occurs during the second week a dog wears the Bark Control Collar. If this does occur, remain consistent and do not alter your use of the Bark Control Collar. You must place the Bark Control Collar on your dog in every situation when you expect him to be quiet. If your dog is not wearing the Bark Control Collar, he may resume barking and his learning would suffer a setback.

Accessories

To purchase additional accessories for your PetSafe® VBC-10 Vibration Bark Control, contact the Customer Care Centre or visit our website at www.petsafe.net to locate a retailer near you. For a listing of Customer Care Centre telephone numbers, visit our website at www.petsafe.net

EN

FR

NL

ES

IT

DE

Regular Maintenance

- Wash the Vibration Points of the collar weekly with a damp cloth. *Note: Turn to the "Off" position before cleaning the Vibration Points.*
- Check your dog's neck for irritation and wash neck weekly.

CAUTION

Risk of skin damage.

- For comfort, safety and effectiveness of this product, please ensure that you check the fit of your pet's collar frequently. If any skin irritation is observed, discontinue the use of the collar for a few days. If the condition persists beyond 48 hours, see your veterinarian.
- Do not attach a lead to the collar. This can result in pulling the Vibration Points too tightly against your pet's neck. Attach a lead to a separate, non-metallic collar or harness, making sure the extra collar does not put pressure on the Vibration Points.

Frequently Asked Questions

<p>Will another dog's bark set off the Bark Control Collar?</p>	<p>No. Patented Perfect Bark™ technology ensures your dog's bark is the only sound that will cause the Vibration Stimulation.</p>
<p>Will the Vibration Bark Control Collar work for my dog?</p>	<ul style="list-style-type: none"> • The Bark Control Collar is safe and effective for all breeds and sizes of dogs. • The System should only be used with pets who are over 6 months of age. If your pet is injured or its mobility otherwise impaired, contact your veterinarian or professional trainer before use.
<p>Can I attach a lead to the Bark Control Collar?</p>	<p>No. This can result in pulling the Vibration Points too tightly against your dog's neck. Attach a lead to a separate, non-metallic collar or a harness, making sure the extra collar does not put pressure on the Vibration Points.</p>

Troubleshooting

My dog keeps barking (does not respond to the Vibration Stimulation).	<ul style="list-style-type: none">• Tighten the Bark Control Collar and/or trim your dog's hair where the Vibration Points touch his neck to ensure good skin contact.• Replace the battery.• If your dog still does not respond, contact the Customer Care Centre.
The Green LED light stopped flashing and there is no red light.	<ul style="list-style-type: none">• Ensure that the battery is properly installed.• Replace the battery.• If the Green LED light is still not flashing, contact the Customer Care Centre.



Battery Disposal

Separate collection of spent batteries is required in many regions; check the regulations in your area before discarding spent batteries. Please see page 8 for instructions on how to remove the battery from the product for separate disposal. This device operates on 1 battery of the type lithium with a 3 Volt, 160 mAh capacity. Replace only with equivalent battery.

EN

FR

NL

ES

IT

DE



Important Recycling Advice

Please respect the Waste Electrical and Electronic Equipment regulations in your country. This equipment must be recycled. If you no longer require this equipment, do not place it in the normal municipal waste system. Please return it to where it was purchased in order that it can be placed in our recycling system. If this is not possible, please contact the Customer Care Centre for further information. For a listing of Customer Care Centre telephone numbers, visit our website at www.petsafe.net.

Compliance



This equipment complies with the EMC and Low Voltage Directives. Unauthorised changes or modifications to the equipment that are not approved by Radio Systems® Corporation may violate EU regulations, could void the user's authority to operate the equipment, and will void the warranty.

The Declaration of Conformity can be found at:
http://www.petsafe.net/customercare/eu_docs.php.

Canada

This Class B digital apparatus complies with Canadian ICES-003.

Operation is subject to the following two conditions: (1) This device may not cause harmful interference, and (2) this device must accept any interference received, including interference that may cause undesired operation.

Modifications or changes could void the user's authority to operate this equipment.

Australia

This device complies with the applicable EMC requirements specified by the ACMA (Australian Communications and Media Authority).

Terms of Use and Limitation of Liability

EN

FR

NL

ES

IT

DE

1. Terms of Use

Use of this Product is subject to your acceptance without modification of the terms, conditions and notices contained herein. Use of this Product implies acceptance of all such terms, conditions and notices. If you do not wish to accept these terms, conditions, and notices, please return the Product, unused, in its original packaging and at your own cost and risk to the relevant Customer Care Centre together with proof of purchase for a full refund.

2. Proper Use

This Product is designed for use with pets where training is desired. The specific temperament or size/weight of your pet may not be suitable for this Product (please refer to "How the System Works" in this Operating Guide). Radio Systems® Corporation recommends that this Product is not used if your pet is aggressive and accepts no liability for determining suitability in individual cases. If you are unsure whether this Product is appropriate for your pet, please consult your veterinarian or certified trainer prior to use. Proper use includes, without limitation, reviewing the entire Operating Guide and any specific Caution statements.

3. No Unlawful or Prohibited Use

This Product is designed for use with pets only. This pet training device is not intended to harm, injure or provoke. Using this Product in a way that is not intended could result in violation of Federal, State or local laws.

4. Limitation of Liability

In no event shall Radio Systems® Corporation or any of its associated companies be liable for (i) any indirect, punitive, incidental, special or consequential damage and/or (ii) any loss or damages whatsoever arising out of or connected with the misuse of this Product. The Purchaser assumes all risks and liability from the use of this Product to the fullest extent permissible by law. For the avoidance of doubt, nothing in this clause 4 shall limit Radio Systems® Corporation's liability for human death or personal injury or fraud or fraudulent misrepresentation.

5. Modification of Terms and Conditions

Radio Systems® Corporation reserves the right to change the terms, conditions and notices governing this Product from time to time. If such changes have been notified to you prior to your use of this Product, they shall be binding on you as if incorporated herein.